

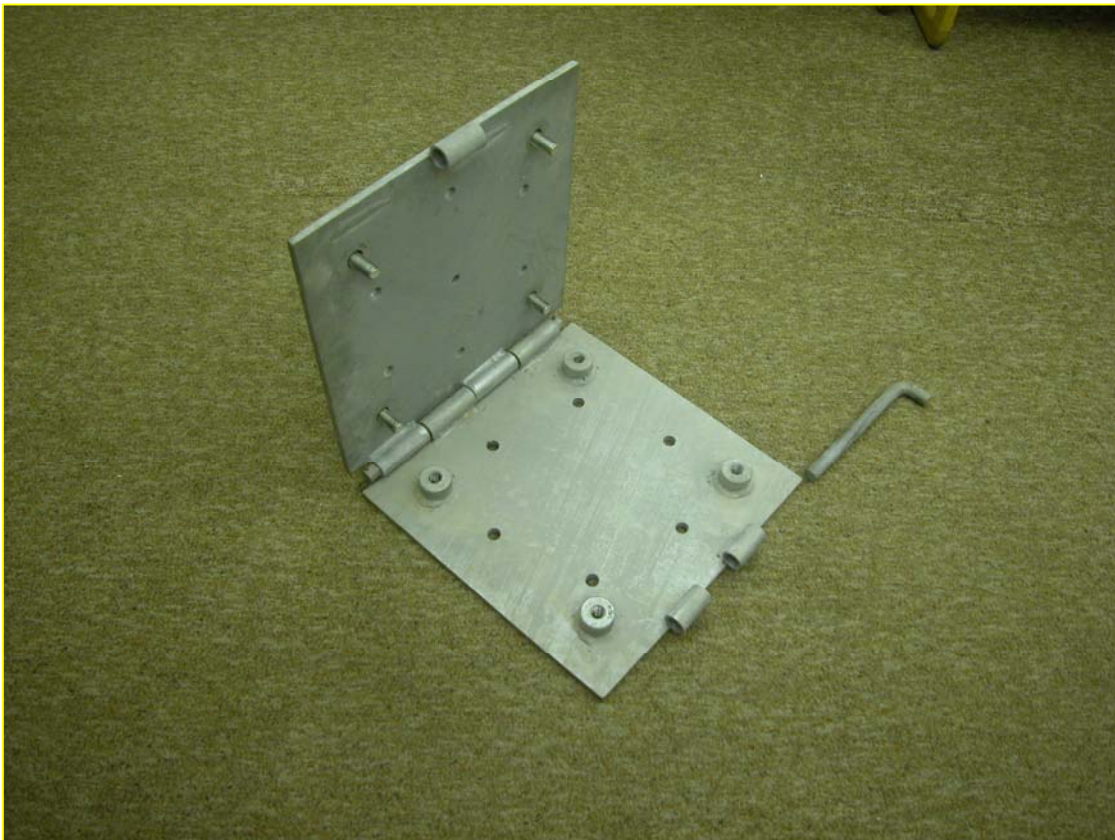
World's Leading Manufacturer Of Fibreglass Whip Antennas



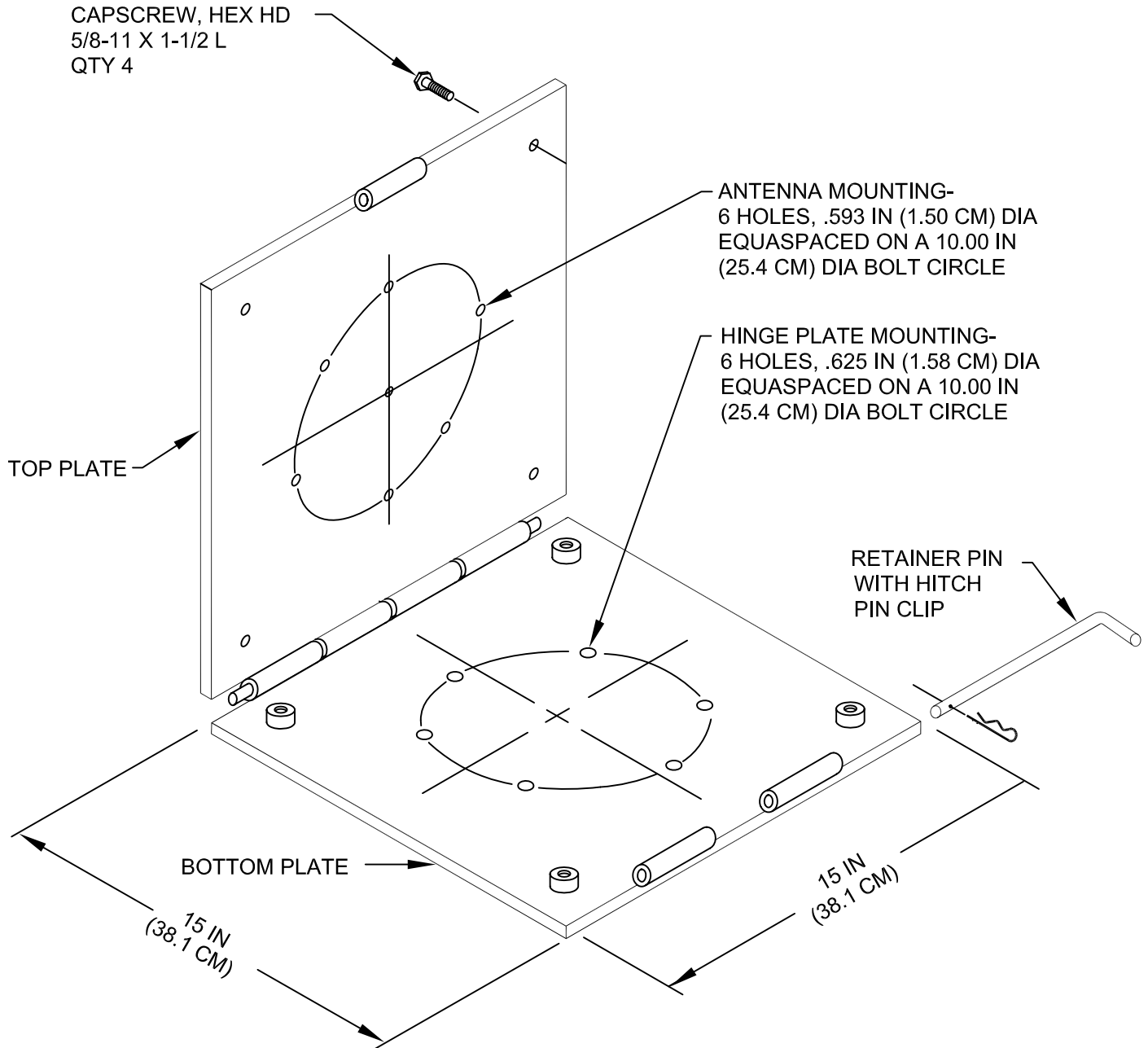
SPECIALISTS FOR HIGH FREQUENCY

VHB-12 Hinge Plate

THE VHB-12 HINGE PLATE IS CONSTRUCTED OF 3/8 THICK GALVANIZED STEEL AND IS USED TO FACILITATE IN THE ERECTION AND DISMANTLING OF VALCOM'S V802 WHIP ANTENNA.



VHB-12 HINGE PLATE QUICK REFERENCE DATA



THE FOLLOWING ARE SUPPLIED AS LOOSE ITEMS:

1. CAPSCREW, HEX HD, 1/2-13 X 3-1/2 L, ZINC/PL STEEL, QTY 6
2. FLATWASHER, 1/2 NOM, ZINC/PL STEEL, QTY 12
3. WASHER, LOCK-SPRING, HELICAL, 1/2 NOM, ZINC/PL STEEL, QTY 6
4. NUT, HEX, 1/2-13, ZINC/PL STEEL, QTY 6



P.O. BOX 603 GUELPH, ONTARIO, CANADA, N1H 6L3
TEL 519-824-3220 FAX 519-824-3411
INTERNET: www.valcom-guelph.com EMAIL: enquiries@valcom-guelph.com