

World's Leading Manufacturer Of Fibreglass Whip Antennas



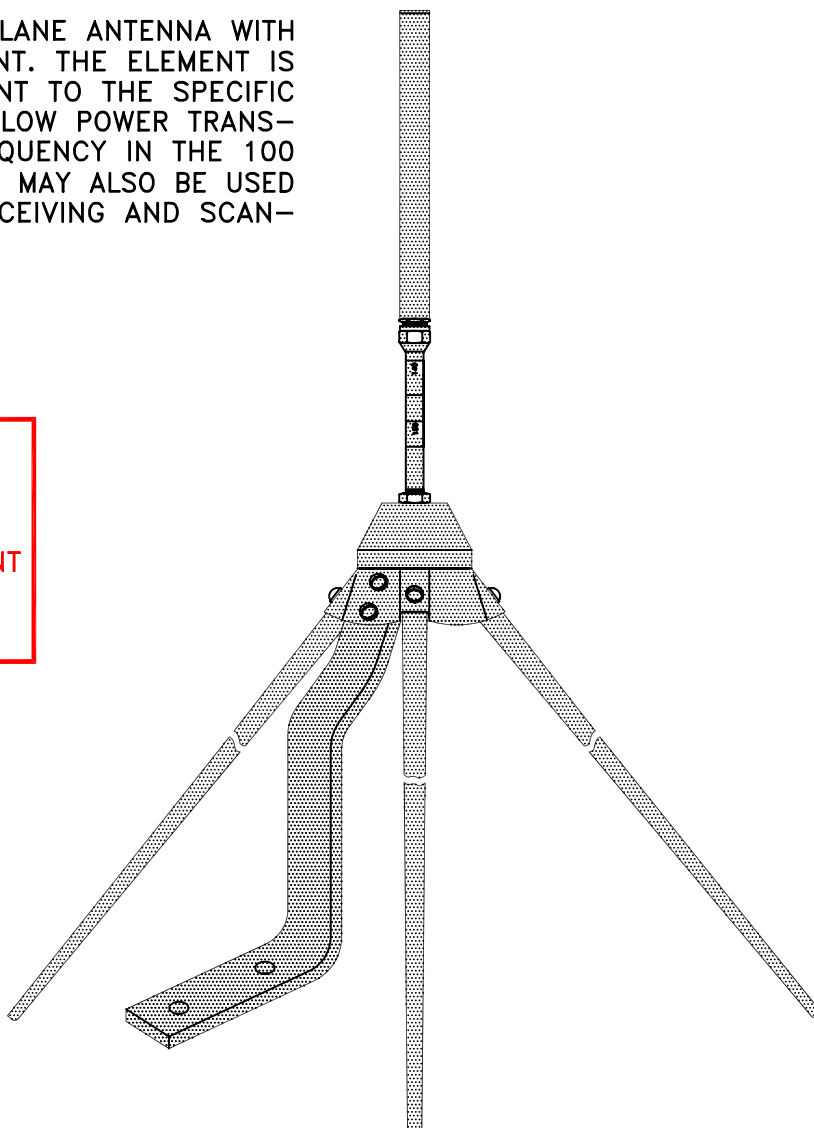
SPECIALISTS FOR HIGH FREQUENCY

VLC-5003 Antenna

THE VLC-5003 IS A GROUND PLANE ANTENNA WITH AN ADJUSTABLE VERTICAL ELEMENT. THE ELEMENT IS GRADUATED TO ALLOW ADJUSTMENT TO THE SPECIFIC LENGTH REQUIRED FOR EFFICIENT LOW POWER TRANSMISSION TO ANY PARTICULAR FREQUENCY IN THE 100 TO 156 MHz RANGE. THE ANTENNA MAY ALSO BE USED UNADJUSTED FOR BROADBAND RECEIVING AND SCANNING APPLICATIONS.

FEATURES:

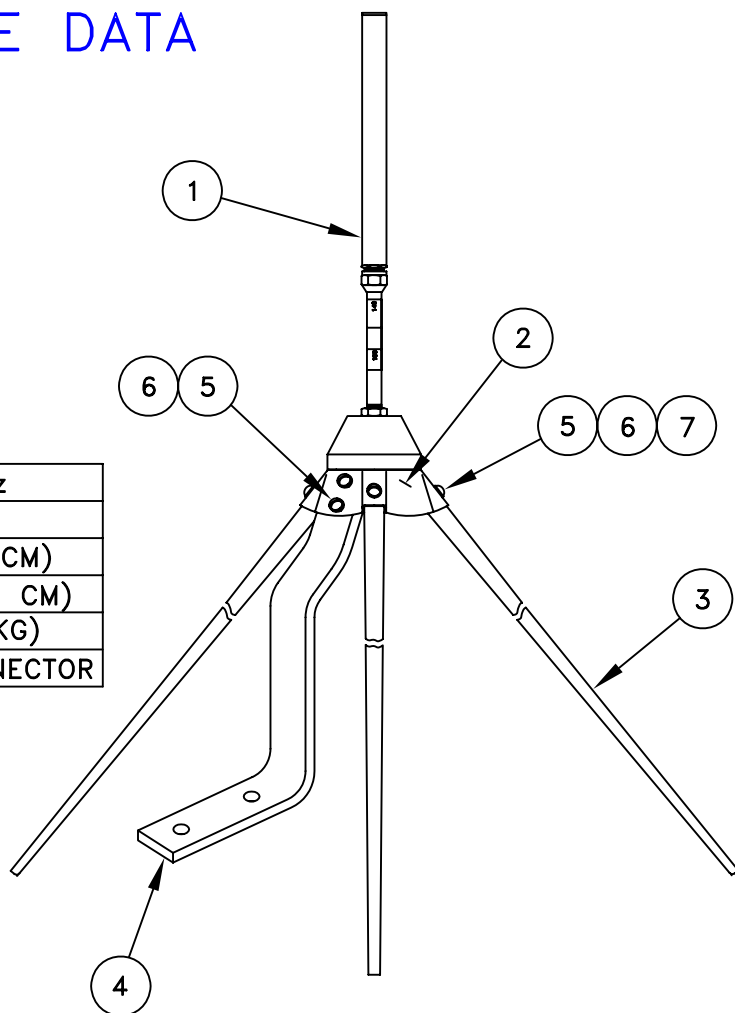
- QUICK ASSEMBLY
- LIGHT-WEIGHT
- EASY FREQUENCY ADJUSTMENT
- MOUNTING BRACKET FOR RAPID INSTALLATION



VLC-5003

QUICK REFERENCE DATA

FREQUENCY RANGE	100-156 MHz
NOMINAL IMPEDANCE	50 OHMS
RADIAL DIAMETER	30 IN (76.2 CM)
MAXIMUM HEIGHT	46 IN (116.8 CM)
WEIGHT	4 LBS (1.8 KG)
TERMINATION	N TYPE CONNECTOR



PARTS LIST

ITEM	DESCRIPTION	QTY
1	ADJUSTABLE ANTENNA ELEMENT	1
2	BASE PLATE ASSY	1
3	GROUND RADIAL	4
4	MOUNTING BRACKET	1
5	MACHINE SCREW, RND HD, 10-32 UNF-2A X .50 L	6
6	WASHER, LOCK-SPRING, NO 10	6
7	NUT, HEX, 10-32 UNF-2B	4

ASSEMBLY INSTRUCTIONS

1. UNPACK ANTENNA AND ACCOUNT FOR ALL PIECES ACCORDING TO PARTS LIST.
2. SCREW ADJUSTABLE ANTENNA ELEMENT INTO BASE PLATE ASSY AND SECURE WITH JAM NUT.
3. PRESS FIT FOUR GROUND RADIALS INTO POSITION ON BASE PLATE ASSY AND SECURE USING ITEMS 5, 6 AND 7.
4. ALIGN HOLES OF MOUNTING BRACKET WITH HOLES ON BASE PLATE ASSY AND ATTACH USING ITEMS 5 AND 6.



P.O. BOX 603 GUELPH, ONTARIO, CANADA, N1H 6L3
 TEL 519-824-3220 FAX 519-824-3411